

# WDS series

## 6 ~ 24Bay 13.3inch Docking Station

www.vipro.com.tw

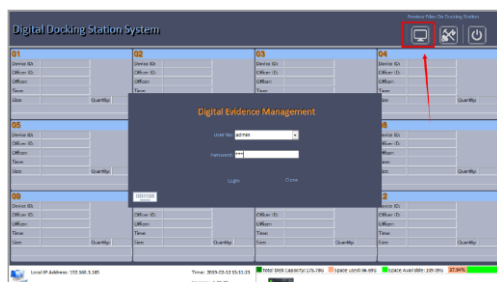


### Key Features

- 13.3" high precision anti-glare touch screen
- The 6th generation of Intel® core™ low voltage processor (i5)
- 4GB DDR3L and 64GB SSD, support quick read and write data
- Support up to 24 units of BV-A11 series BWC
- Support up to 16TB storage (for 12~24Bay)
- Wall-mounted and desktop design
- Innovative, effective, and silent cooling system
- Multi-level permission management
- Simultaneous data automatic access and import of multiple devices
- Remote data inquiry, playback, data download
- Support cloud management (optional)



### Data Evidence Management System



WDS series are the latest Docking Station available in 6Bay, 12Bay, 18Bay and 24Bay options. The system has built-in 13.1" HD touch screen and bundled with Digital Evidence Management System software for BV-A11 series Body Worn Camera.

WDS series work as the multi-charging docking station and are capable of simultaneous data management of up to 24 units of BV-A11 series body worn cameras. WDS dock station can be wall-mounted or desktop used.

### Technical Specifications

Hardware Configuration	Product series	WDS series (6~24Bay Docking Station)	
	CPU	Intel i5 6 <sup>th</sup> Generation	
	Main screen	13.3inch FHD 1920*1080 IPS	
	Touch screen	Multi-touch (up to 10 dots)	
	Memory	4GB DDR3L	
	SSD	64GB	
	HDD	Built-in 2x 3.5" HDD drawer, each up to 8TB (6 Bay can only install 1 HDD)	
	Wi-Fi	802.11 ac/a/b/g/n, 2.4G/5G	
	Docking Bay	6ch POGO Port by default (support up to 3 extended docks, 24ch in total)	
	Trumpet	2x 2W trumpets	
	Charging current	Maximum current of single port is 1.5A	
	Charging indicator light	Support	
	Overload protection	The PSU of BWC and station protect against short circuit, overload and over-voltage	
	Operating System	Windows 10	
	Application Software	DEMS (PC version)	
Interface (Port)	Software Encryption	Soft Dog HASP PRO (sub lock), USB disk embedded	
	Temperature	Working: -10°C~55°C Storage: -40°C~60°C	
	USB port	USB3.0 x 2, USB2.0 x 6 (per dock)	
	Ethernet	Gigabit network port	
	AC Input Voltage	AC 100V---220V/ 2A input	
	Power	ATX 400W	
	HDMI	Support	
	VGA	Support	
	Audio in / Audio out	1ch / 1ch	
	Power switch	Support	
Mechanical	Power Consumption	WDS06	Max. 80W
		WDS12	Max. 120W
		WDS18	Max. 210W
		WDS24	Max. 250W
	Dimension (L x W x H)	WDS06	56.5 x 46.0 x 13.0(CM)
		WDS12	56.5 x 64.5 x 13.0(CM)
		WDS18	56.5 x 85.0 x 13.0(CM)
		WDS24	56.5 x 106.5 x 13.0(CM)
	Net Weight / Gross Weight	WDS06	10.9 KG / 19.0 KG
		WDS12	13.1 KG / 25.0 KG
		WDS18	16.5 KG / 33.0 KG
		WDS24	19.5 KG / 48.0 KG

# WDS series

## 6 ~ 24Bay 13.3inch Docking Station

www.vipro.com.tw

Functionality	
Time Synchronization	Time Synchronization
System Structure	B/S or C/S infrastructure
Online Map / Offline Map	The same set of electronic evidence management system supports online map and offline map, GPS data can be displayed on the offline map trajectory, high compatibility, powerful functions.
Index Automatic Upload	The generated index file is automatically uploaded to the server database
Multiple Storage Method	Storage can be distributed, centralized, mixed multiple storage.
Data Empty	BWC terminal access automatically emptied BWC storage space.
Large file upload	Large file upload function, the system supports more than 2G large file transmission, download, play and other functions
High-speed upload	At the same time insert 6 x fully recorded 16G BWC, in 50 minutes all data upload completed.
Data Collection	Automatically read the law enforcement terminal within the time and date, product number, police number, remaining memory, remaining battery information.
Unit Management	Administrators have the right to add to the unit information, modify, delete operation, ordinary users do not have this permission.
User Management	Administrators have the right to add to the unit information, modify, delete operation, ordinary users do not have this permission.
Device Management	Administrators have the right to add to the unit information, modify, delete operation, ordinary users do not have this permission.
Operation Journal	All operations have the operation log
Bookmark	Important data has bookmark function, user can mark on the important data of BWC for easy access
Data Lock	Important data has lock function, user can lock on the important data of BWC to avoid deletion
Device Match	BWC inserted slot is corresponding one by one to the software interface.
Input Operation	Data management device supports virtual keyboard, when the need to run automatically pop up a virtual keyboard, support drop-down list to select input method.
Storage Space	Intelligent find disk function (in addition to Disk C, D, the docking station automatically find the storage space function)
Insufficient Storage Space Handling	Data management equipment in the storage disk data is full, in accordance with the order automatically overflow.
Storage Space Display	Online management status bar should be able to immediately view the docking station free space.
Docking Station Online Management	The management server can immediately view the status of its own collection station, whether it is online, whether to upload data, and query the collection station's disk space)
File Security	The administrator has permission to delete the data file in the data management device, and the normal user does not have the permission.

# WDS series

## 6 ~ 24Bay 13.3inch Docking Station

www.vipro.com.tw

Data Export	The administrator has the permission to export the data in the management device, and the normal user does not have the permission.
Interrupt Point Resume	With interrupted point resume function, to prevent data loss.
Expansion Platform	Reserved network interface: According to the demand for upgrading to cloud architecture system.
Upgrade Features	The system has an automatic upgrade function, the management server can upgrade their own collection of workstations at remote sites.
Self-service System Recovery	Standby system repair U disk, after the connection self-recovery system, and ensure that no data is lost. (provided by user's PC)
File Search	Accurate search (enter the BWC equipment number, police number, date, file type and other detailed information for retrieval).
	Sort search (refers to the selected function to sort search by the BWC shooting time search, the BWC upload time search, search by sirens, by BWC number search, press file index search, etc.).
	Fuzzy search (refers to the input keywords, keywords, key digits, etc.).
	Dedicated video player (the same screen, display video information, including the police officer number, BWC number, shooting time, upload time, marked content, small window display video playback content. Play content, you can full-screen video playback).
	Dedicated audio player (with the same screen, showing a variety of information on audio information, including the police officer number, BWC number, shooting time, upload time, mark the contents of the small window display audio playback. Play content, you can full-screen display of audio content).
	Dedicated picture viewer (the same screen, showing pictures of various information materials, including the police officer number, BWC number, shooting time, upload time, marked content, small window display picture playback. Picture play content, you can full screen display image play content).